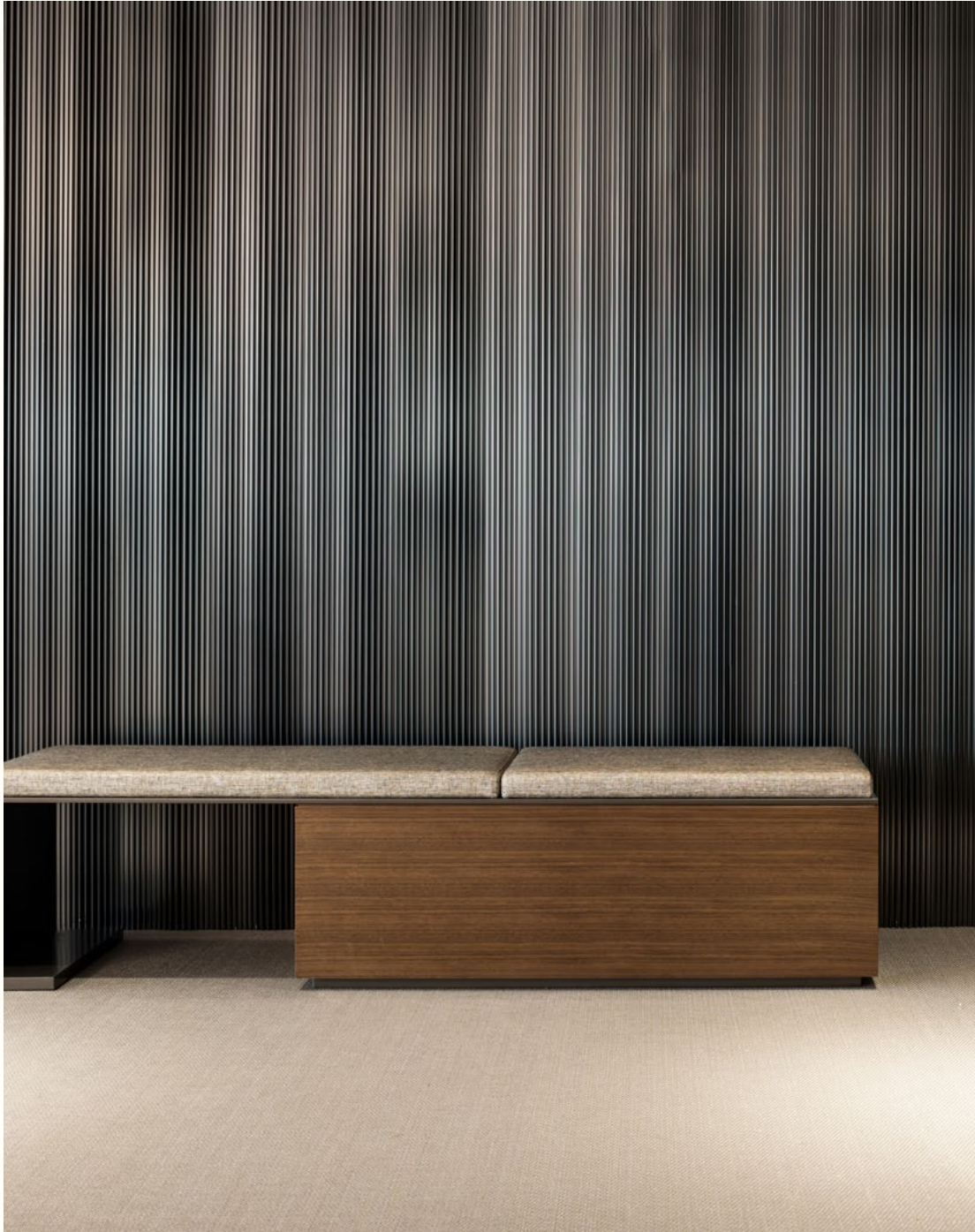


# COMMERCIAL PROJECTS

Be inspired by projects from all over the world and explore how others have used our floorings to create spaces to thrive in.



**BOLON**



## WOVEN DESIGN FOR THE CONTRACT MARKET

Bolon is a design-driven family business specialising in innovative flooring solutions for the contract market. Since the start in 1949, we have gone from a traditional weaving mill to an international design brand. With a fundamental dedication to sustainability, we design and produce all our products in Ulricehamn, Sweden.

Bolon is suitable for commercial projects of all sizes and offers versatile solutions for interior designs. Apple, Google, Microsoft, Miele, Nike, and Samsung are some of the renowned brands that have used Bolon to enhance their brand experience.





02	INTRO
05	WHY BOLON
06	BEAUTY WITH BENEFITS
07	OUR PRODUCTS
08	REFERENCES
16	CLEANABILITY
17	CLIMATE-NEUTRAL PRODUCTS AND PRODUCTION
18	TESTIMONIAL
20	WOVEN DURABILITY



WHY BOLON?

CHARACTERISTIC	BOLON	TEXTILE CARPET	LINO RUBBER RESILIENT VINYL	HARD WOOD	CONCRETE STONE CERAMIC
LCCA - Life Cycle Cost Analysis <sup>1</sup>	●	●	●	●	●
Extensive product lifespan <sup>2</sup>	●	●	●	●	●
Appearance retention over time <sup>3</sup>	●	●	●	●	●
Textile appearance	●	●	●	■	■
Comfort under foot	●	●	●	■	■
Impact sound reduction <sup>4</sup>	●	●	●	●	●
Slip resistance	●	●	●	●	●
Impervious material	●	■	●	■	●
Antistatic properties	●	●	●	●	●
Minimal chemical properties	●	■	●	●	●

● LOW SCORE   ● HIGH SCORE   ■ NOT AVAILABLE

<sup>1</sup> Due to lower cleaning and maintenance costs comparing carpet and hardwood and the durability of Bolon flooring the LCCA will give a positiv result.  
The LCCA can be calculated per project by a third party and is not something we calculate ourselves.

<sup>2</sup> Bolon flooring has a long product lifetime during which we offer warranties up to 15 years.

<sup>3</sup> Unlike textile, carpet or hardwood, our flooring retains its appearance without flattening.

<sup>4</sup> Our acoustic flooring improves the decibel value up to 22 dB.







## BEAUTY WITH BENEFITS

- All Bolon flooring and rugs are climate-neutral and contain 68% recycled materials.
- Bolon flooring and products have a positive result on the LCCA Life Cycle Cost Analyses and low maintenance costs during the lifetime.
- The unique combination of outstanding design, low maintenance and technical features makes Bolon the best choice for your interiors.
- Bolon flooring makes it easy to roll both castor chairs and wheelchairs, which enhances smooth working.
- Bolon acoustic flooring offers increased impact sound insulation by reducing the transmission of footstep noise to rooms below.



## OUR PRODUCTS

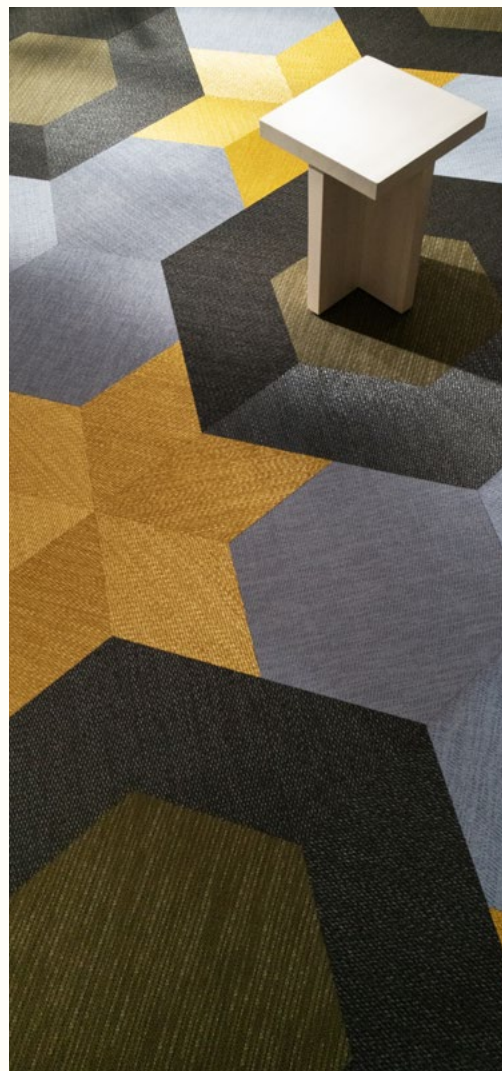
### ROLLS



### TILES / ACOUSTIC TILES



### STUDIO TILES



### RUGS



## LOBBY

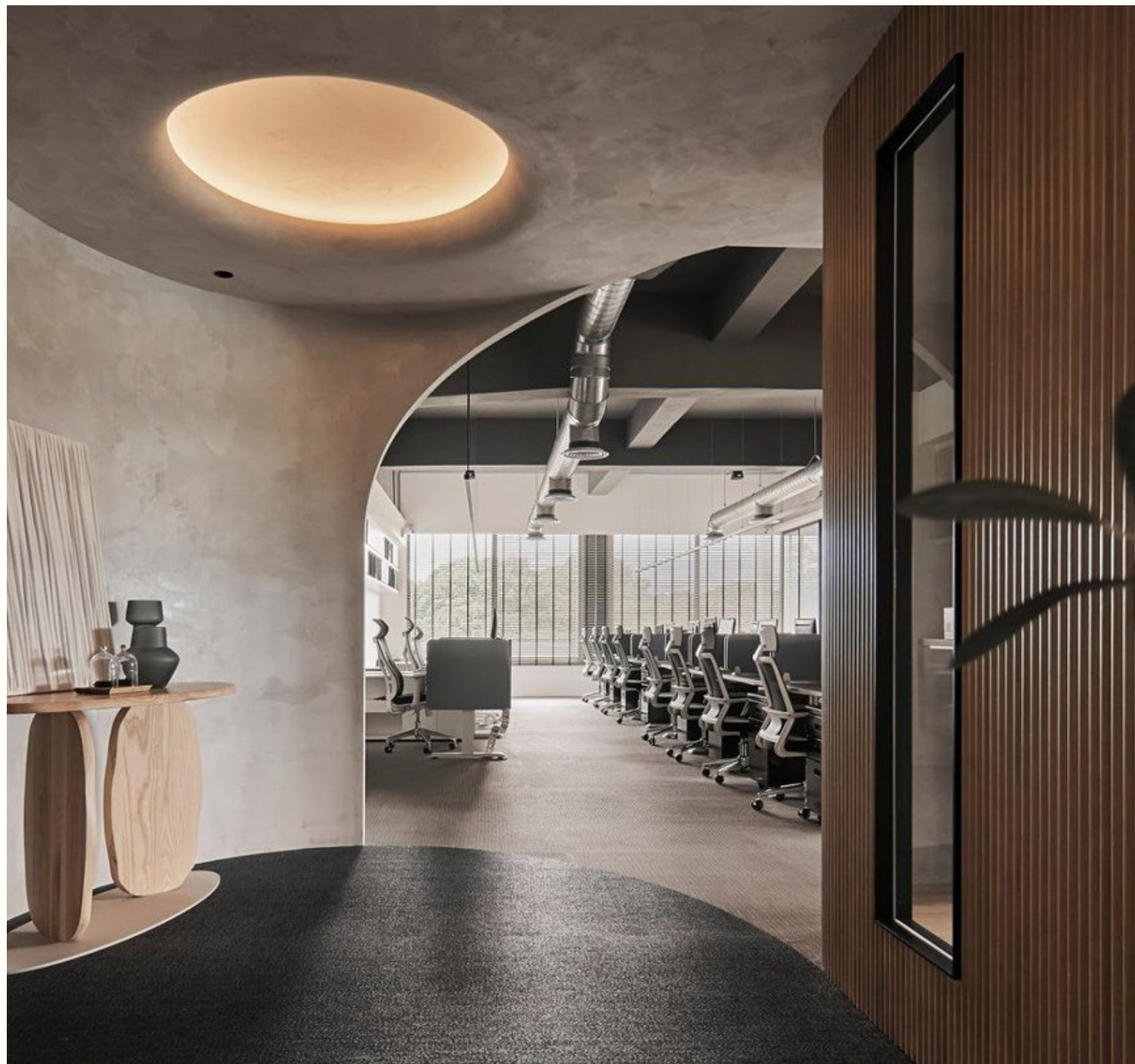
- Unique design possibilities that improve the customer experience
- Built to withstand constant movement and heavy foot traffic





## WORKSPACE

- Bold design that creates an inspiring environment
- Durable construction suitable for castor chairs
- Supports good indoor air quality and an easy-to-clean workspace



SYNERGY DEVELOPMENT CENTER OFFICE / Changhua County, Taiwan

SILENCE: Pause

ELEMENTS: Flint

## CONFERENCE ROOM

- Perfect for business settings with frequent furniture movement
- Maintains freshness, supporting good indoor air quality





## DINING AREA

- Provides a visually engaging and pleasant dining environment
- Easy maintenance, retaining a fresh and pleasant appearance in high-traffic environments





## SOCIAL SPACES

- Distinctive Bolon design sets a memorable tone for social interactions
- Low operational costs



LANDESSPORTBUND BRANDENBURG / Potsdam, Germany  
NOW: Champagne, Brass  
ARTISAN: Ivory  
BKB: Sisal Plain Beige



## CORRIDORS

- Comfortable underfoot
- Durable construction, suitable for high traffic
- Low maintenance for cleaning, designed to withstand heavy loads



## STAIRS

- Designed to handle continuous foot traffic with ease
- Easy to maintain and resistant to spills





## LIBRARY

- Fosters a warm, welcoming atmosphere for study and relaxation
- Comfortable underfoot and durable construction
- Easy to maintain and supports good indoor air quality





## CLEANABILITY

Bolon flooring represents an unbeatable combination of design, durability, ease of cleaning, maintenance, and sustainability. Looking after it correctly will give you many years of pleasure and performance.

Due to its impermeable and solid construction it is simple to take care of – most maintenance can be accomplished with a vacuum cleaner, scrubbing brush and water.

Read more about maintenance on our website [here](#).



VACUUM CLEANER



STAIN REMOVER



WATER



SCRUBBING BRUSH





## CLIMATE-NEUTRAL PRODUCT AND PRODUCTION

Sustainability isn't just something we say; it's what we do. We are proud that our sustainability work covers all our products, not just selected niche collections. This means that all our products contain 68% recycled material, with 0% climate impact in every square meter. All our manufacturing takes place in our climate-neutral factory in Sweden.

Read more about our sustainability and certifications on our website [here](#).







*“With a broad product portfolio, ranging from mélange neutrals to bright colours, Bolon offers long-lasting flooring and rugs for all kinds of design solutions in the commercial sector.”*

KLARA PERSSON,  
DESIGN DIRECTOR





*“STTK’s entire office has Bolon flooring. Particularly our conference rooms are in heavy use. Although the chairs in the conference rooms are not on wheels, the flooring has withstood the constant moving of the chairs. Cleaners praise the easy maintenance. Bolon comes in different designs to enliven the look of the office. It’s hard to imagine any other carpet-like flooring solution for offices.”*

ERKKI LAVONSALO, CFO  
STTK

STTK / Helsinki, Finland  
ELEMENTS: Cork, Birch

## WOVEN DURABILITY

When choosing Bolon, you get a high-end design flooring with all the practical benefits of woven vinyl. Beautiful, tactile and easy to clean and maintain. A perfect choice for any commercial project.







# BOLON

For more information please reach out to Sales Support  
[info@bolon.com](mailto:info@bolon.com) | +46 321 530 400