

# EDUCATIONAL PROJECTS

Be inspired by projects from all over the world and explore how others have used our floorings to create spaces to thrive in.



**BOLON**





## WOVEN DESIGN FOR THE CONTRACT MARKET

Bolon is a design-driven family business specialising in innovative flooring solutions for the contract market. Since the start in 1949, we have gone from a traditional weaving mill to an international design brand. With a fundamental dedication to sustainability, we design and produce all our products in Ulricehamn, Sweden.

Bolon is suitable for educational projects of all sizes and offers versatile solutions for your interior designs. Karolinska Institute, Istituto Marangoni, Copenhagen University, Goethe Institute, University of Helsinki and University of Applied Sciences of Turku are some of the well-known educational facilities that have chosen Bolon for their premises.





02	INTRO
05	WHY BOLON
06	BEAUTY WITH BENEFITS
07	OUR PRODUCTS
08	REFERENCES
15	CLEANABILITY
17	CLIMATE-NEUTRAL PRODUCTS AND PRODUCTION
18	CASE STUDY
19	WOVEN DURABILITY







WHY BOLON?

CHARACTERISTIC	BOLON	TEXTILE CARPET	LINO RUBBER RESILIENT VINYL	HARD WOOD	CONCRETE STONE CERAMIC
LCCA - Life Cycle Cost Analysis <sup>1</sup>	●	●	●	●	●
Extensive product lifespan <sup>2</sup>	●	●	●	●	●
Appearance retention over time <sup>3</sup>	●	●	●	●	●
Textile appearance	●	●	●	■	■
Comfort under foot	●	●	●	■	■
Impact sound reduction <sup>4</sup>	●	●	●	●	●
Slip resistance	●	●	●	●	●
Impervious material	●	■	●	■	●
Antistatic properties	●	●	●	●	●
Minimal chemical properties	●	■	●	●	●

●

 LOW SCORE 

●

 HIGH SCORE 

■

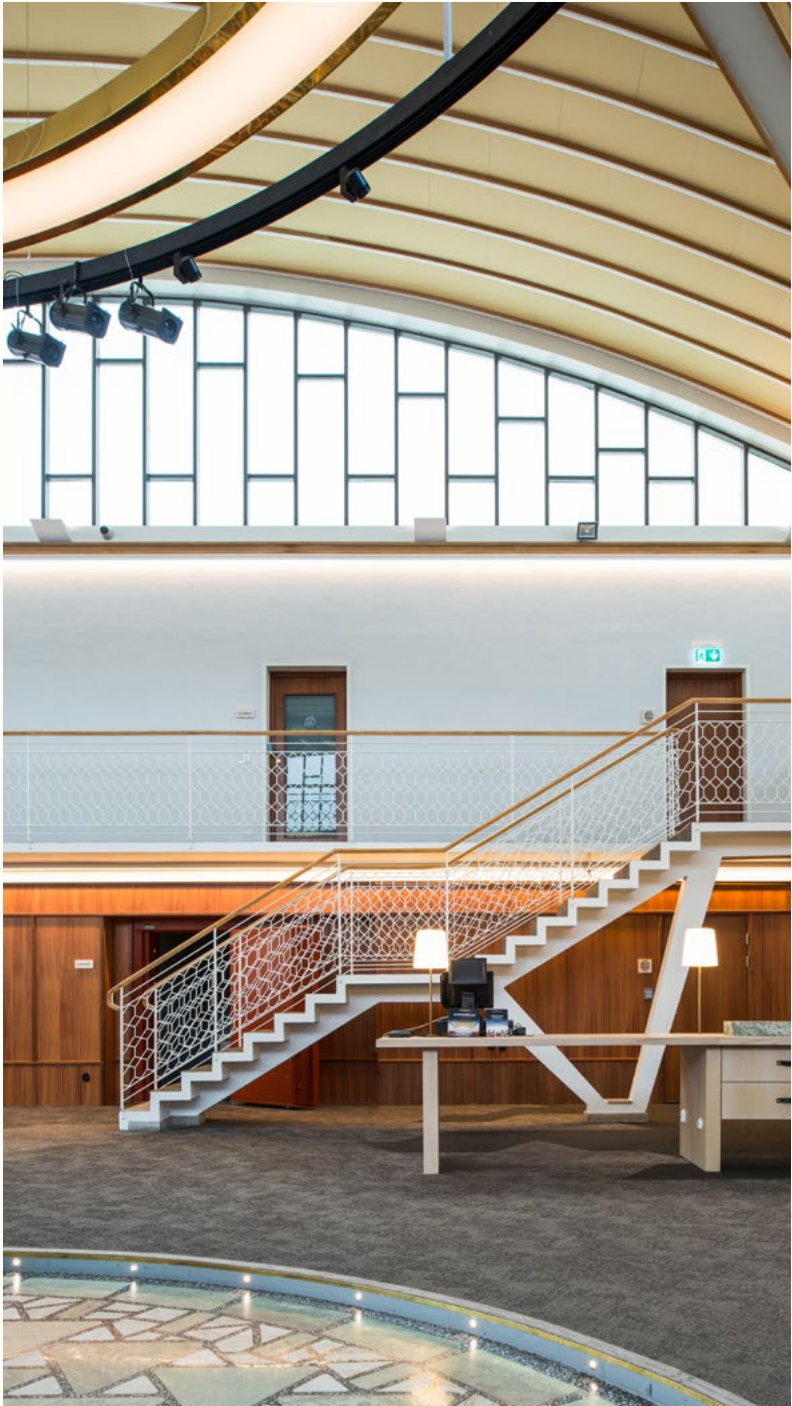
 NOT AVAILABLE

<sup>1</sup> Due to lower cleaning and maintenance costs comparing carpet and hardwood and the durability of Bolon flooring the LCCA will give a positiv result.  
The LCCA can be calculated per project by a third party and is not something we calculate ourselves.

<sup>2</sup> Bolon flooring has a long product lifetime during which we offer warranties up to 15 years.

<sup>3</sup> Unlike textile, carpet or hardwood, our flooring retains its appearance without flattening.

<sup>4</sup> Our acoustic flooring improves the decibel value up to 22 dB.





## BEAUTY WITH BENEFITS

- All Bolon flooring and rugs are climate-neutral and contain 68% recycled materials.
- With Bolon, you have endless possibilities to create an inspiring, educational environment with excellent functional features that support good indoor air quality.
- Bolon flooring makes it easy to roll with castor chairs and wheelchairs, which enhances smooth working.
- Feel safe with your investment due to the high durability standards, long lifetime, and 10– to 15-year warranty.



## OUR PRODUCTS

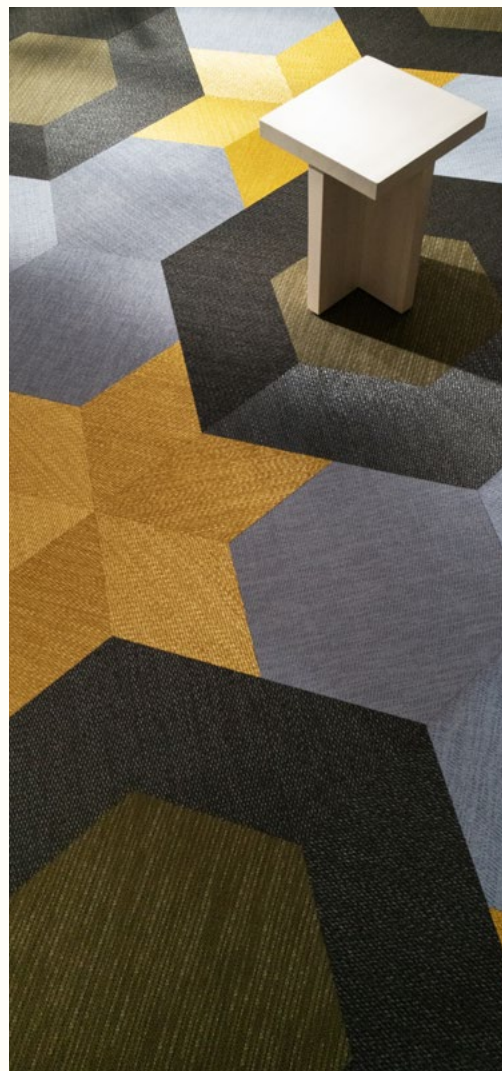
### ROLLS



### TILES / ACOUSTIC TILES



### STUDIO TILES



### RUGS



## CLASSROOM

- Perfect for active learning spaces with mobile furniture
- Unique design that creates an inspiring environment
- Easy to maintain, and supports good indoor air quality





## AUDITORIUM

- Ensures a comfortable environment for large groups
- Elevates the auditorium space for performances and lectures





## SOCIAL SPACES

- The distinctive design creates a cosy and inviting environment
- Low operational costs





## CANTEEN

- Easy maintenance, retaining a fresh and pleasant appearance in high-traffic environments
- Contributes to an enjoyable dining experience for students and staff





## LIBRARY

- Fosters a comfortable, quiet space for study and relaxation
- Ideal for spaces with high traffic and long hours of use
- Easy to maintain and supports good indoor air quality





## CORRIDOR

- Perfect for long periods of walking in busy hallways
- Easy to maintain in high-traffic school areas





## STAIRS

- Suitable for high traffic
- Comfortable and durable construction
- Easy to maintain and resistant to spills





## CLEANABILITY

Bolon flooring represents an unbeatable combination of design, durability, ease of cleaning, maintenance, and sustainability. Looking after it correctly will give you many years of pleasure and performance.

Due to its impermeable and solid construction, it is simple to maintain – most cleaning and maintenance can be accomplished with a vacuum cleaner, scrubbing brush, and water.

Read more about maintenance on our website [here](#).



VACUUM CLEANER



STAIN REMOVER



WATER



SCRUBBING BRUSH







BOTANIC: Tilia

*“Seeking knowledge and engaging in education is about envisioning a new future. Bolon flooring is a design solution with the ability to create a visual foundation for that quest.”*

KLARA PERSSON,  
DESIGN DIRECTOR



## CLIMATE-NEUTRAL PRODUCT AND PRODUCTION

Sustainability isn't just something we say; it's what we do. We are proud that our sustainability work covers all our products, not just selected niche collections. This means that all our products contain 68% recycled material, with 0% climate impact in every square meter. All our manufacturing takes place in our climate-neutral factory in Sweden.

Read more about our sustainability and certifications on our website [here](#).

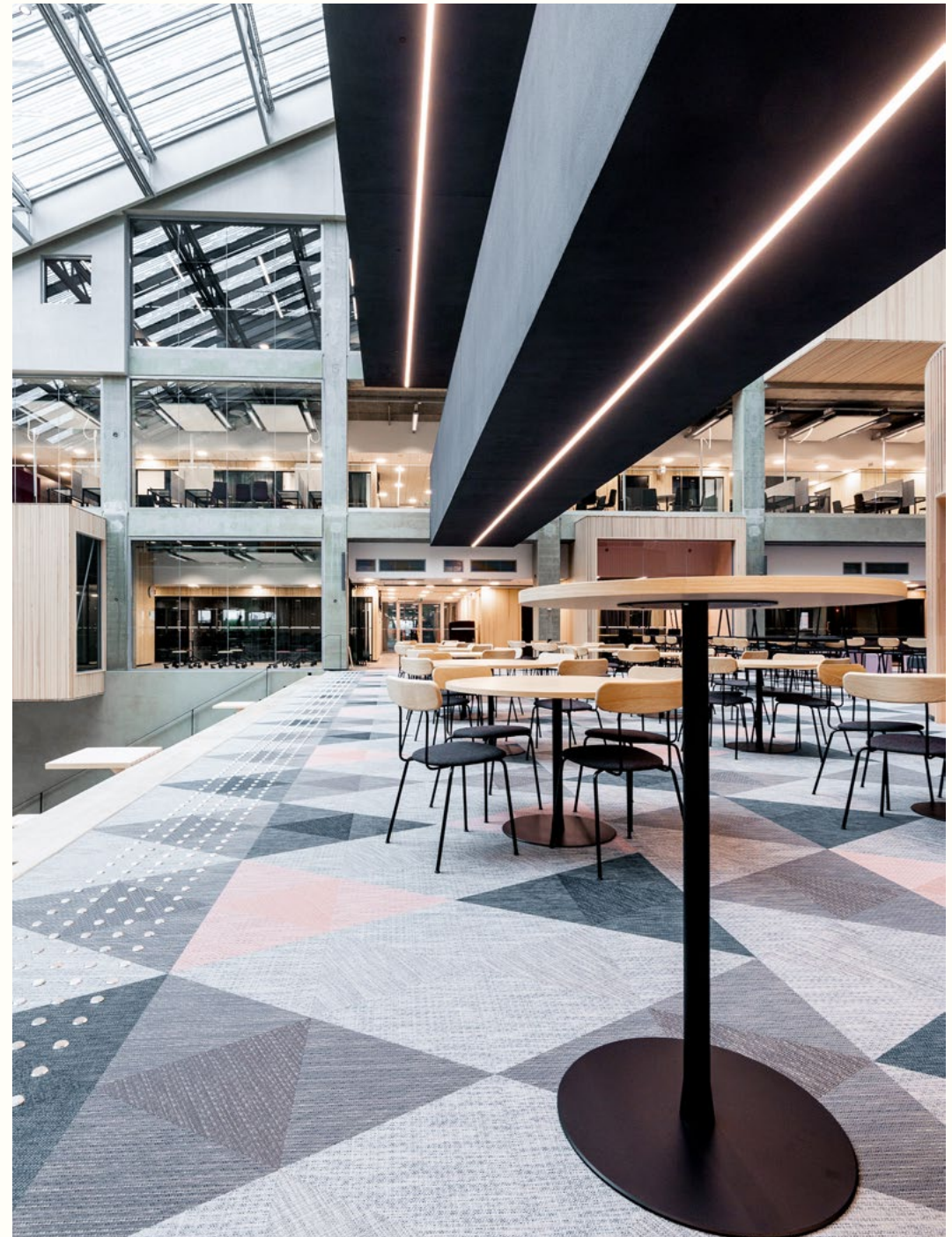






## CASE STUDY – EDUCITY

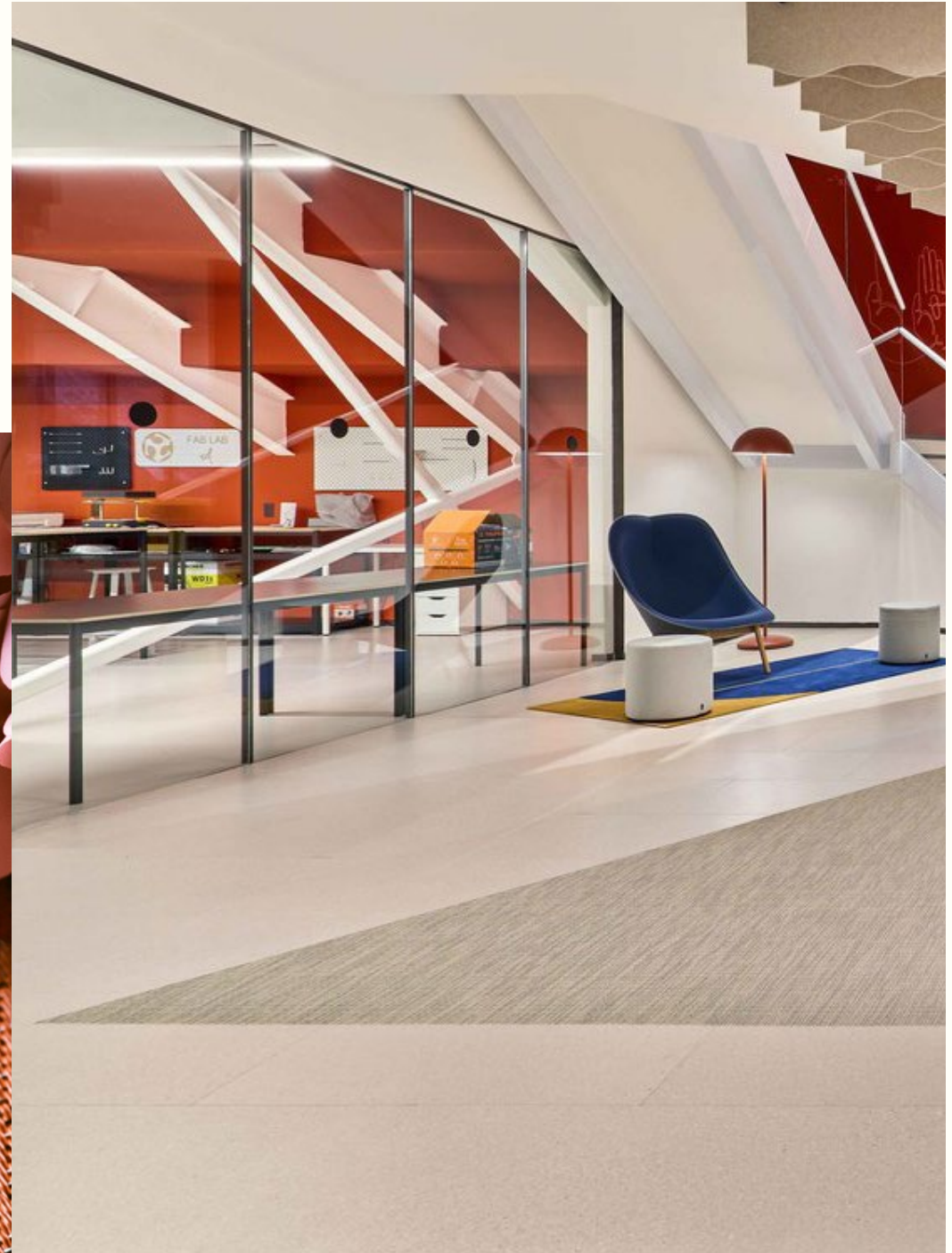
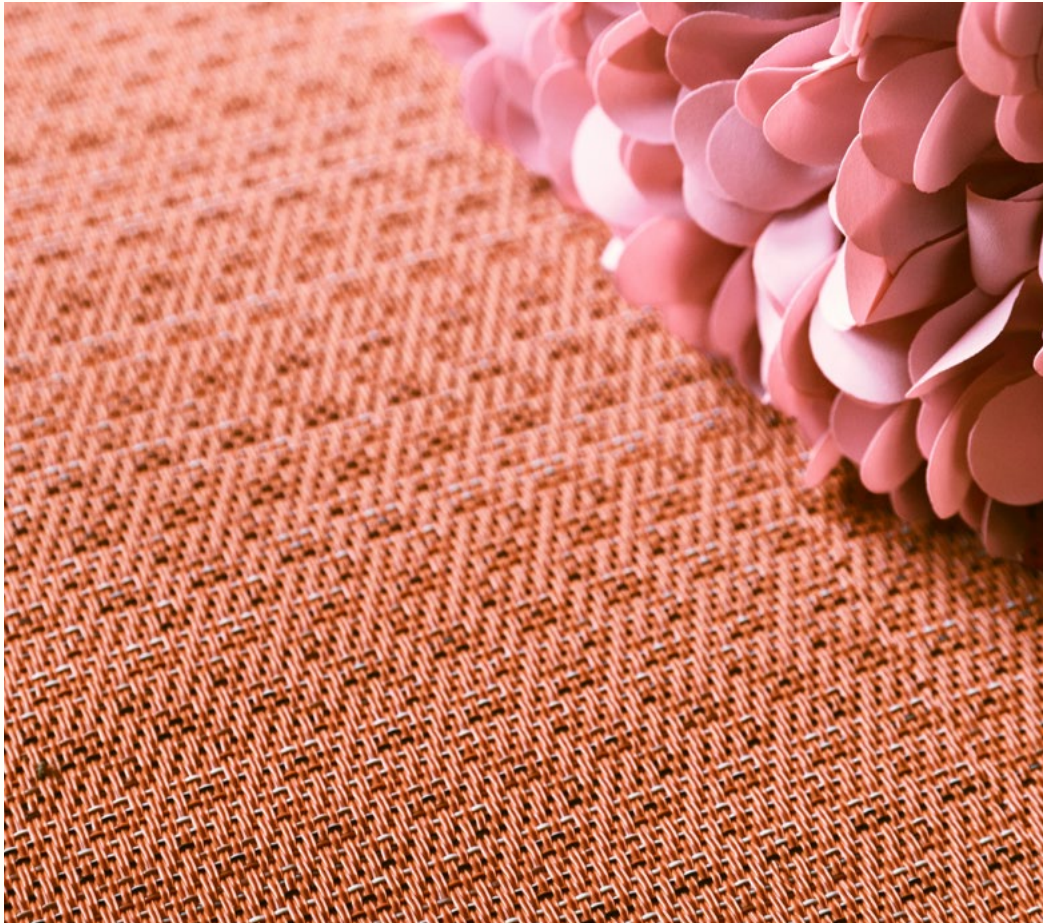
EduCity is Kupittaa campus' new centre for education, innovation and research. Located in Turku Science Park, the seven-story building combines existing buildings with modern architecture and links innovation and education through inspiring and sustainable architecture. The dynamic shapes, woven structure and versatile colours of Bolon helped architects choose Bolon Studio Triangle, Artisan Slate, customized Artisan Kale and Elements Wool for the 4000 m2 project. The result is a dynamic, and inspiring educational experience. After all, learning isn't meant to be boring.





## WOVEN DURABILITY

Schools, universities and other educational premises demand flooring solutions that are durable, easy to clean, and at the same time, comfortable. With Bolon the educational interior will be both creative, inspiring and practical to use.







# BOLON

For more information please reach out to Sales Support  
[info@bolon.com](mailto:info@bolon.com) | +46 321 530 400